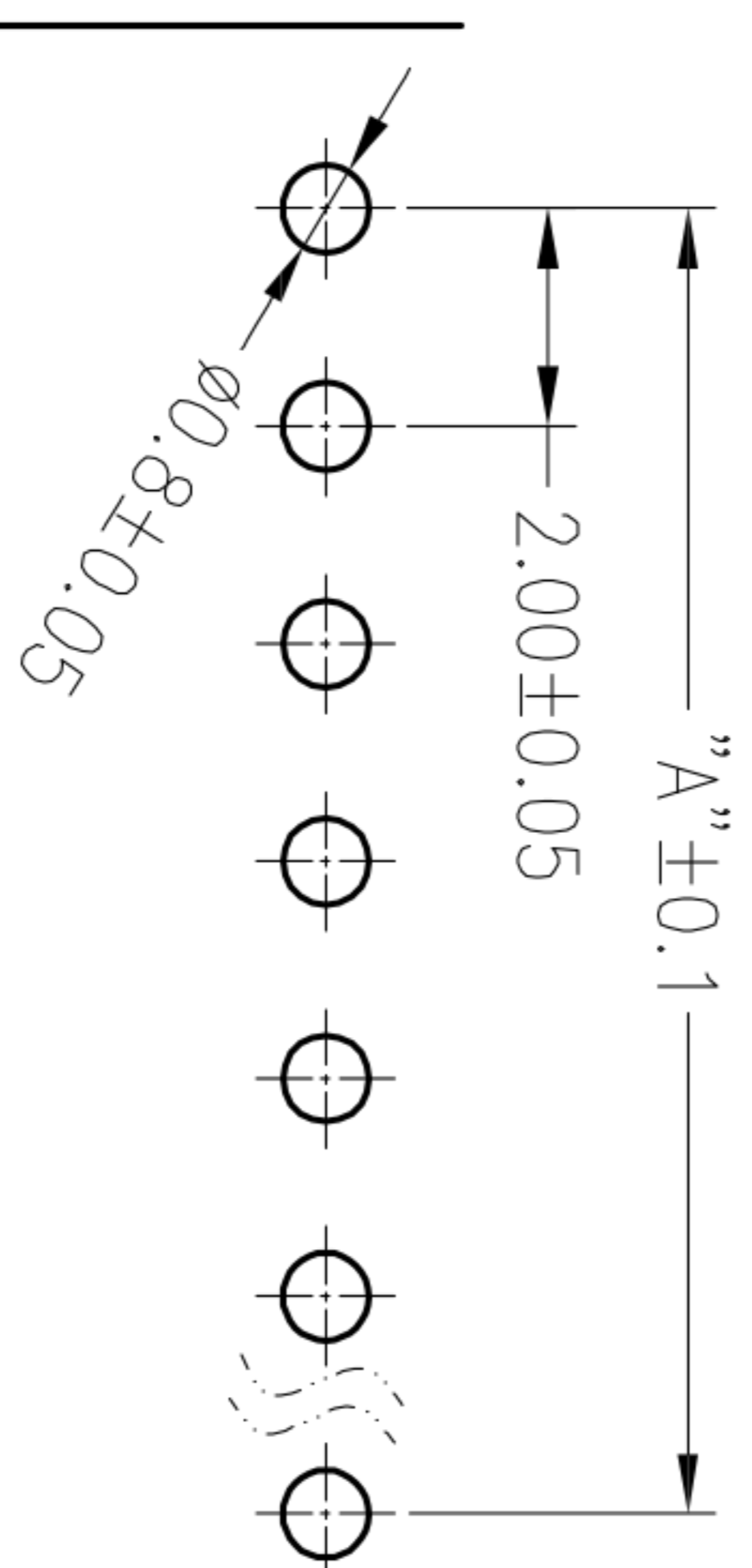
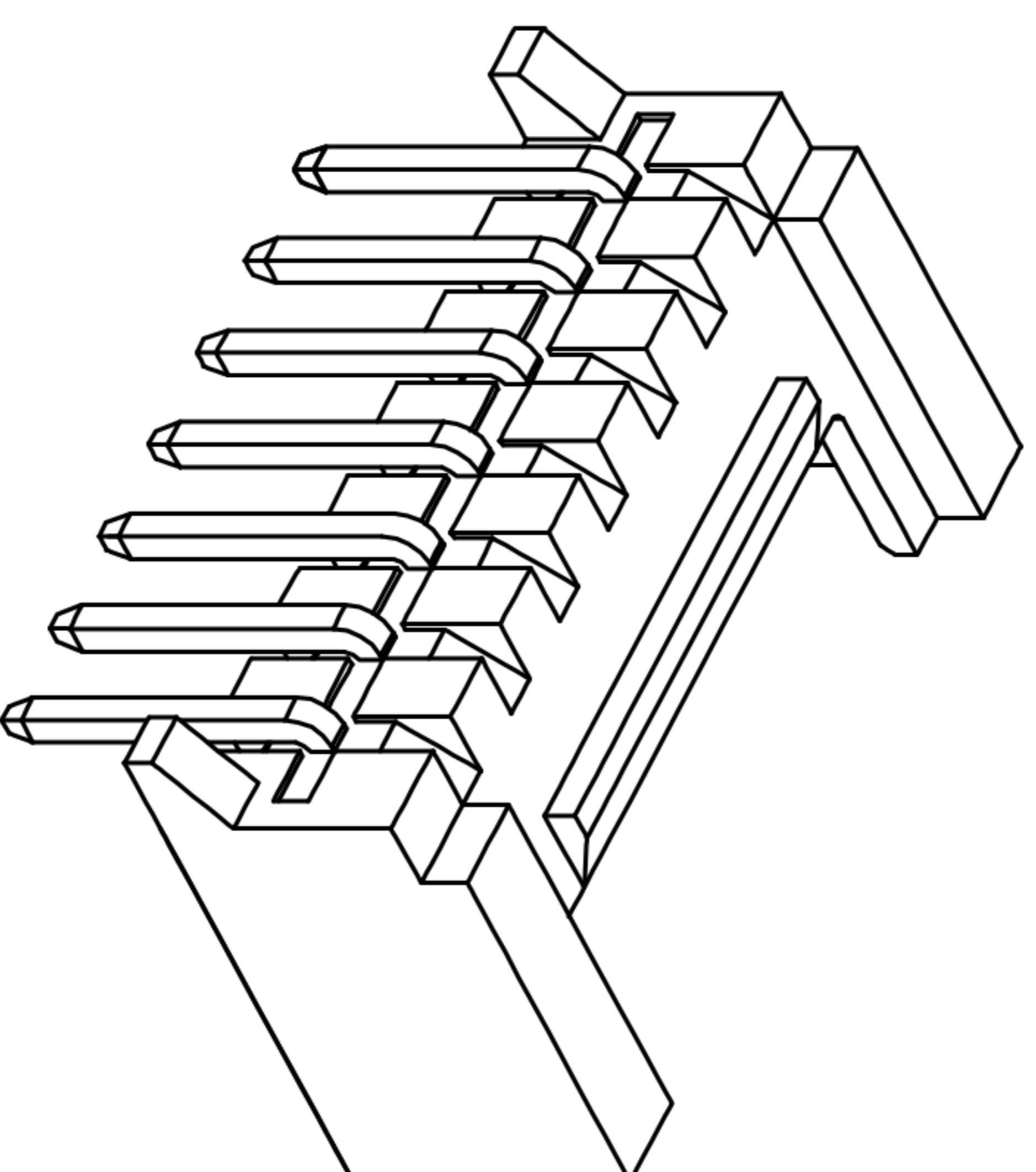
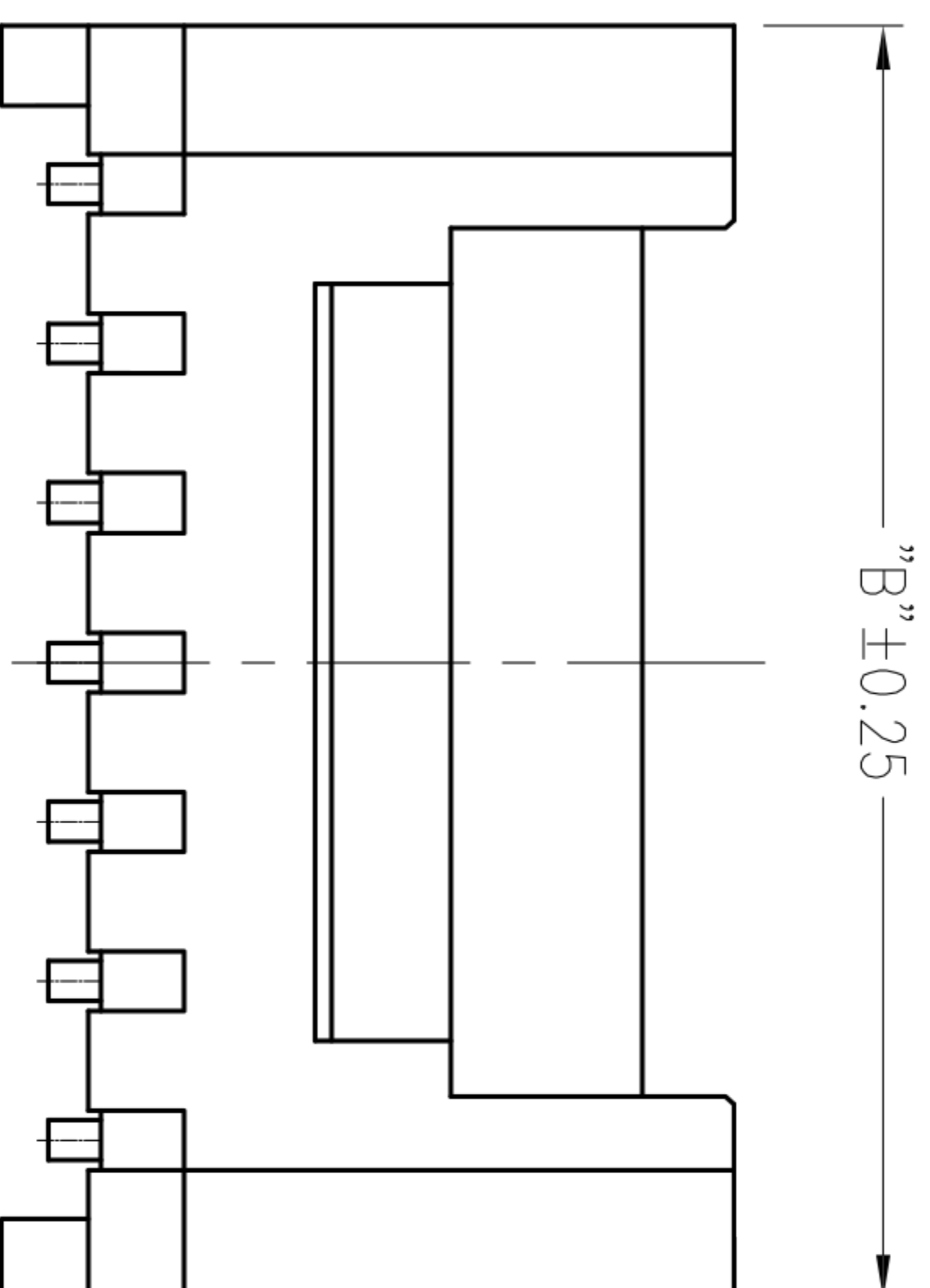
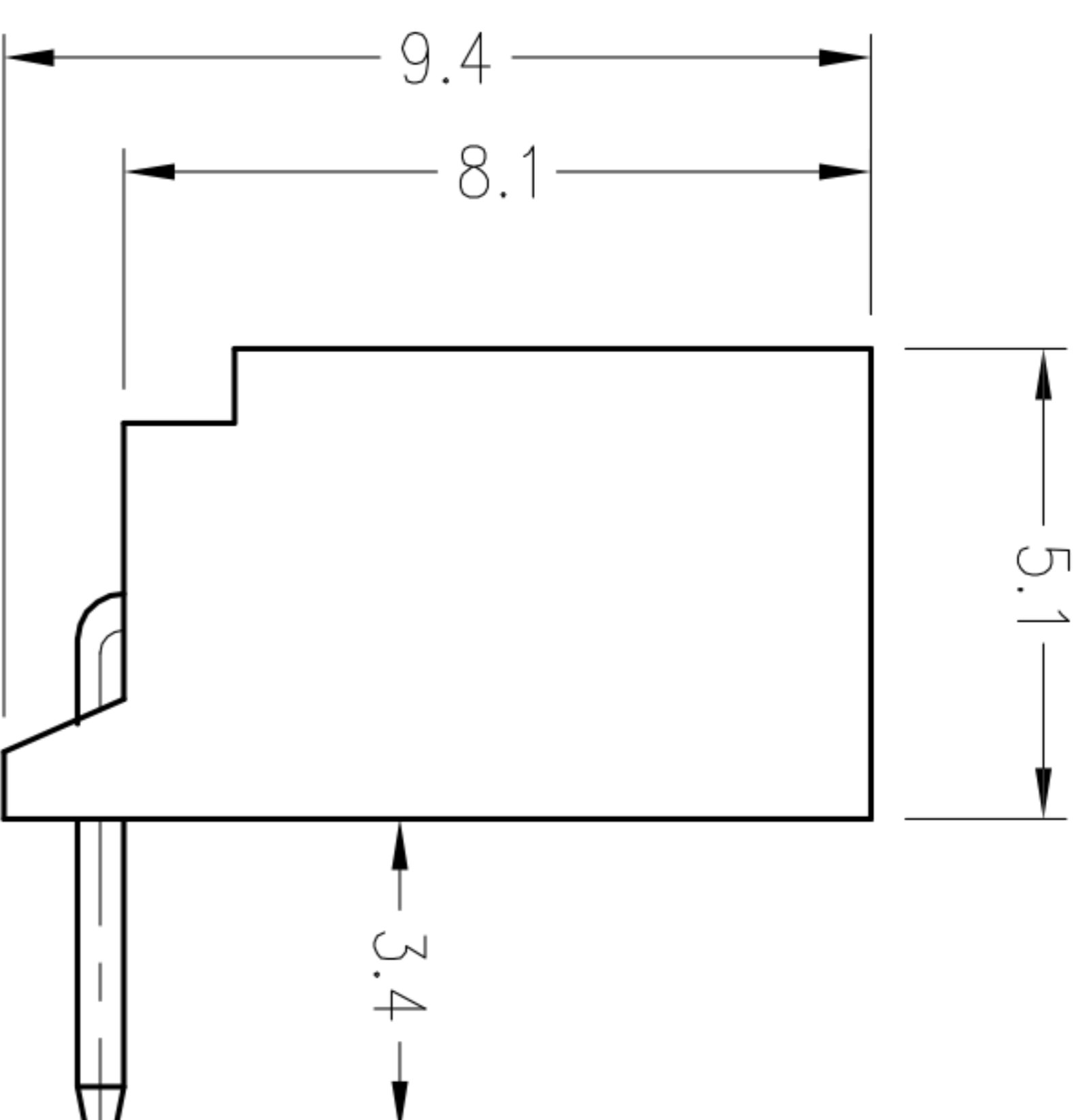
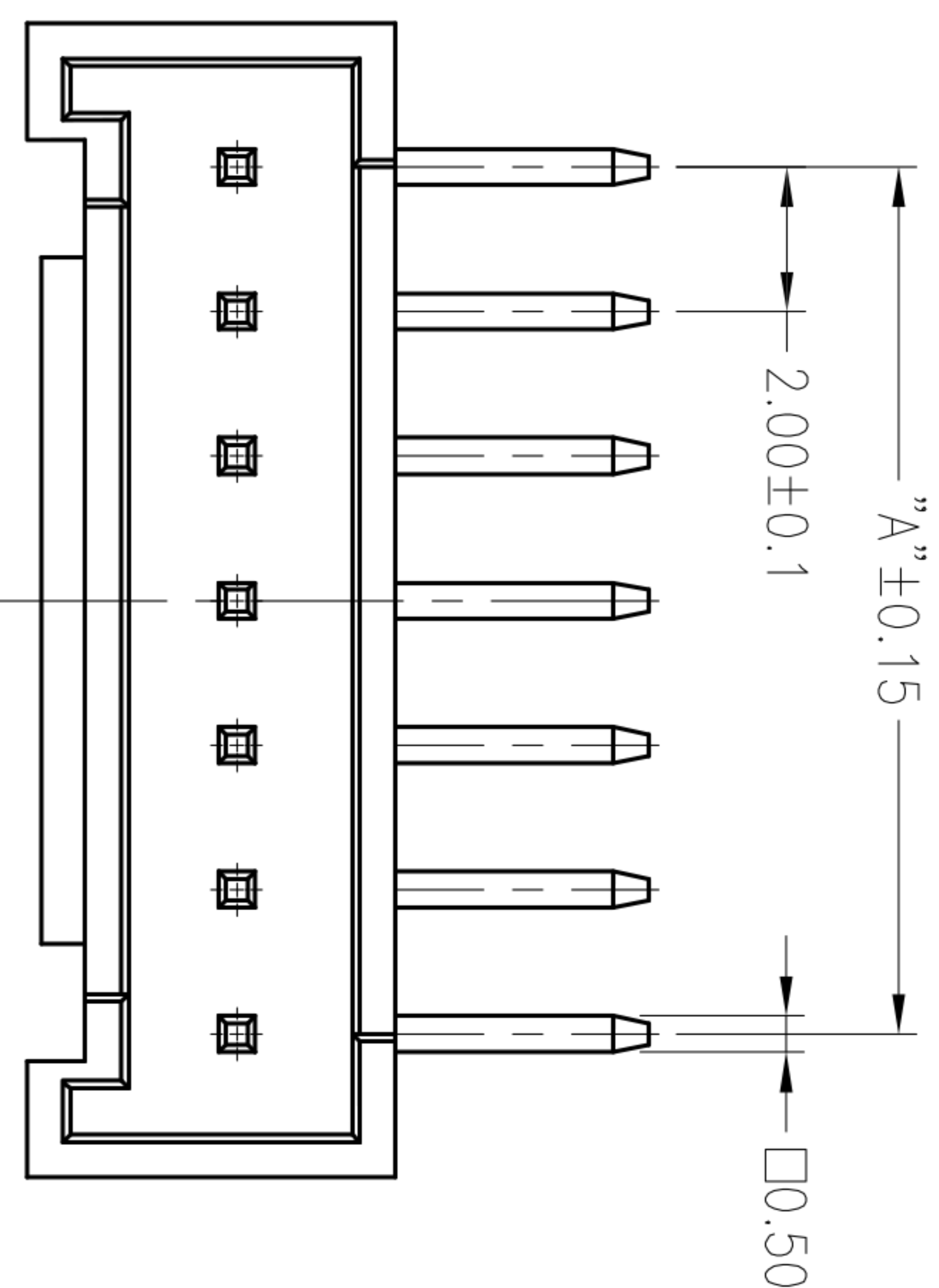


Poles	DIM.A	DIM.B
2P	2.0	6.0
3P	4.0	8.0
4P	6.0	10.0
5P	8.0	12.0
6P	10.0	14.0
7P	12.0	16.0
8P	14.0	18.0
9P	16.0	20.0
10P	18.0	22.0
11P	20.0	24.0
12P	22.0	26.0
13P	24.0	28.0
14P	26.0	30.0
15P	28.0	32.0
16P	30.0	34.0



■ 技术参数 SPECIFICATIONS

- ◆ 适用线规: AWG#30~#22
 - ◆ 适用线规: AWG#30~#22
 - ◆ 额定电压: 125V DC, AC(rms)
 - ◆ 额定电压: 125V DC, AC(rms)
 - ◆ 额定电流: 2A (AWG #22)
 - ◆ 额定电流: 2A (AWG #22)
 - ◆ 耐压值: 1000V AC/minute
 - ◆ 耐压值: 1000V AC/minute
 - ◆ 工作温度: -25°C ~ +85°C
 - ◆ 工作温度: -25°C ~ +85°C
 - ◆ 绝缘电阻: ≥1000 MΩ
 - ◆ 绝缘电阻: ≥1000 MΩ
 - ◆ 接触电阻: ≤20mΩ
 - ◆ 接触电阻: ≤20mΩ
- 材料 MATERIAL
- ◆ 胶壳: 尼龙66, UL94-V2
 - ◆ 胶壳: 尼龙66, UL94-V2
 - ◆ 接触针: 黄铜
 - ◆ 接触针: 黄铜
- Contact PIN: Brass

P.C.B. Layout

ECN NO.	REV.	DATE.	DESCRIPTION.	CHANGE.	CHECK.	APPRO.
	A		NEW			

APPROVALS		DATE	TITLE:	
DRAWN	ZHIWEI.CHEN	2015.07.07	PART NO.	GP01-2002WR-NP-L
CHECKED			UNIT: mm	SCALE: 1:1
APPROVALS			DRAWING NO.	
TOLERANCES ARE				PROJ.
	30~以上	±0.30		
	10~30	±0.20		
	5~10	±0.15		
	~ 5	±0.10		
		±2'		



深圳市联丰电子有限公司
SHENZHEN LINFENG ELECTRONIC CO.,LTD