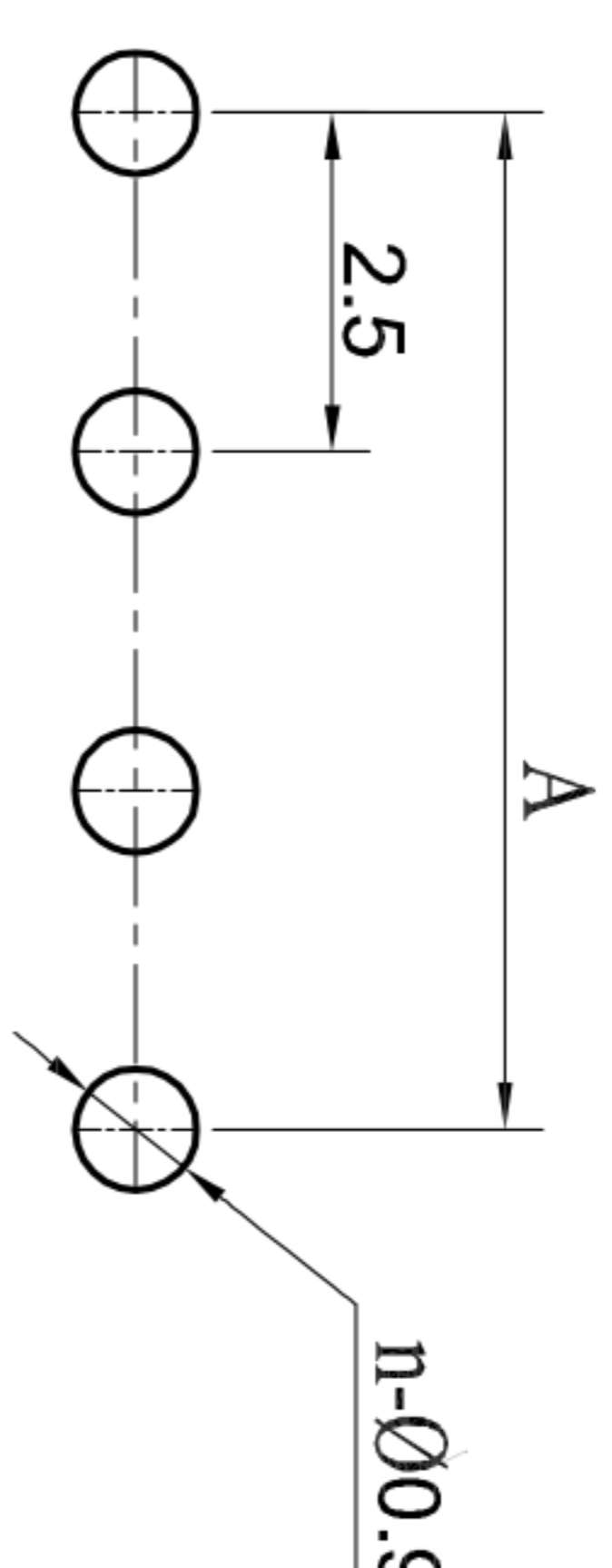
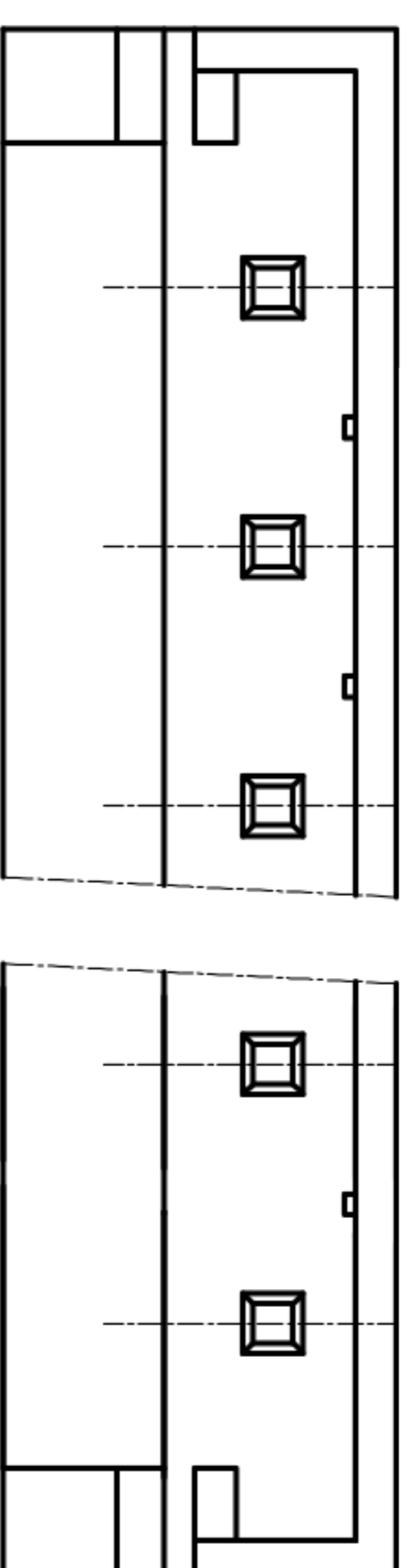
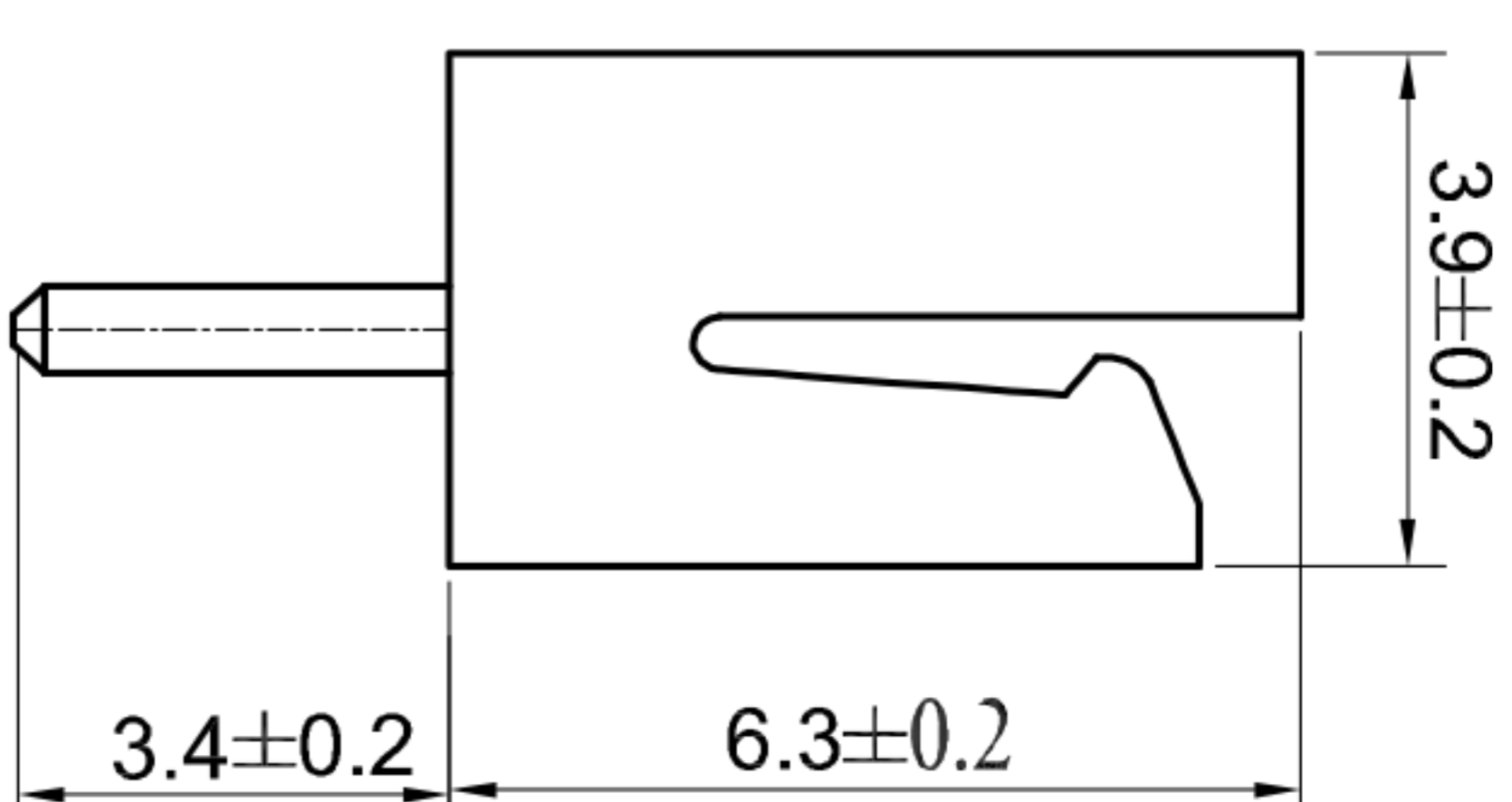
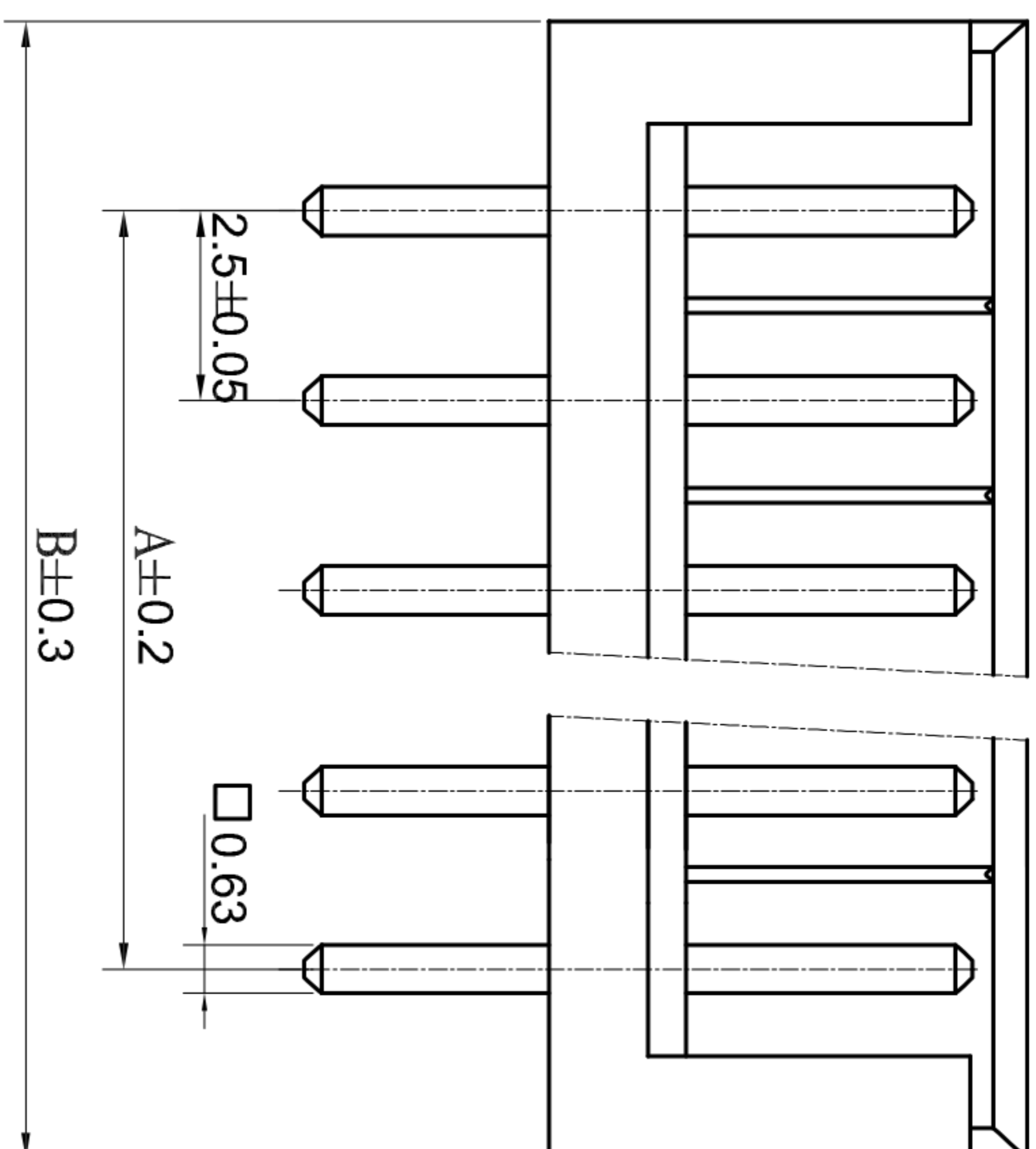


POLES	DIMENSIONS(mm)	
	A	B
2	2.5	7.5
3	5.0	10.0
4	7.5	12.5
5	10.0	15.0
6	12.5	17.5
7	15.0	20.0
8	17.5	22.5
9	20.0	25.0
10	22.5	27.5
11	25.0	30.0
12	27.5	32.5
13	30.0	35.0
14	32.5	37.5
15	35.0	40.0



PCB 安装尺寸图

■ 技术参数 (SPECIFICATIONS)

- ◆ 额定电压: 250V AC DC
Voltage rating: 250V AC DC
- ◆ 额定电流: 3.0A AC DC MAX
Current rating: 3.0A AC DC MAX
- ◆ 耐压值: 800V AC/minute
Withstand voltage: 800V AC/minute
- ◆ 绝缘电阻: 1000MΩ MIN
Insulation resistance: 1000MΩ MIN
- ◆ 接触电阻: 0.02Ω MAX
Contact resistance: 0.02Ω MAX
- ◆ 工作温度: -25°C ~ +85°C
Working Temperature: -25°C ~ +85°C
- ◆ 间距: 2.5 mm
Pitch: 2.5 mm

■ 材料 (MATERIAL)

- ◆ 基座: 尼龙66
Water: Nylon66
- ◆ 插针: 黄铜
Pin: Brass

ECN NO.	REV.	DATE.	DESCRIPTION.	CHANGE.	CHECK.	APPRO.
	A		NEW			

APPROVALS		DATE	TITLE:	
DRAWN	ZHIWEI.CHEN	2015.07.07	PART NO.	GP01-2502WV-NP
CHECKED			UNIT: mm	SCALE: 1:1
APPROVALS			DRAWING NO.	PROJ:
TOLERANCES ARE				SHEET 1 OF 1
30~以上	±0.30	ANGLE		
10~30	±0.20			
5~10	±0.15			
~ 5	±0.10	±2'		



深圳市联丰电子有限公司
SHENZHEN LINFENG ELECTRONIC CO.,LTD