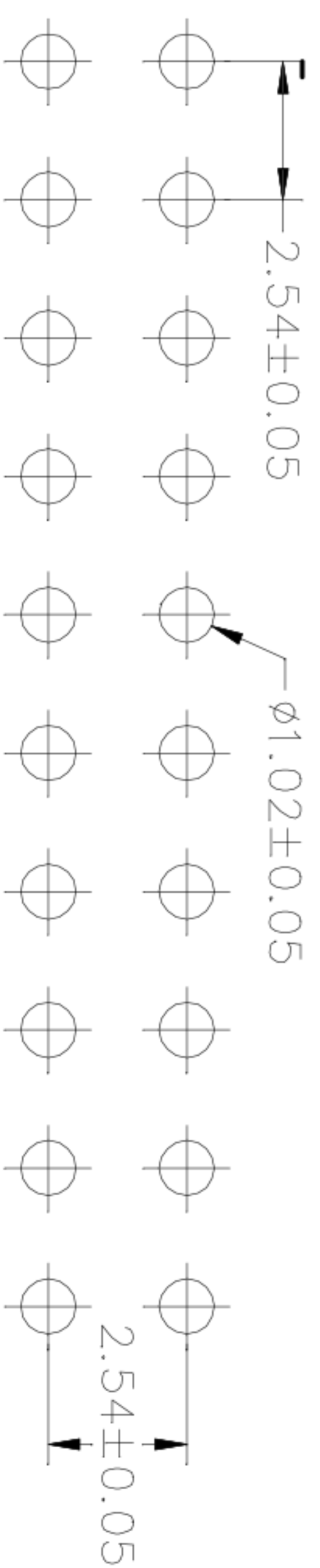
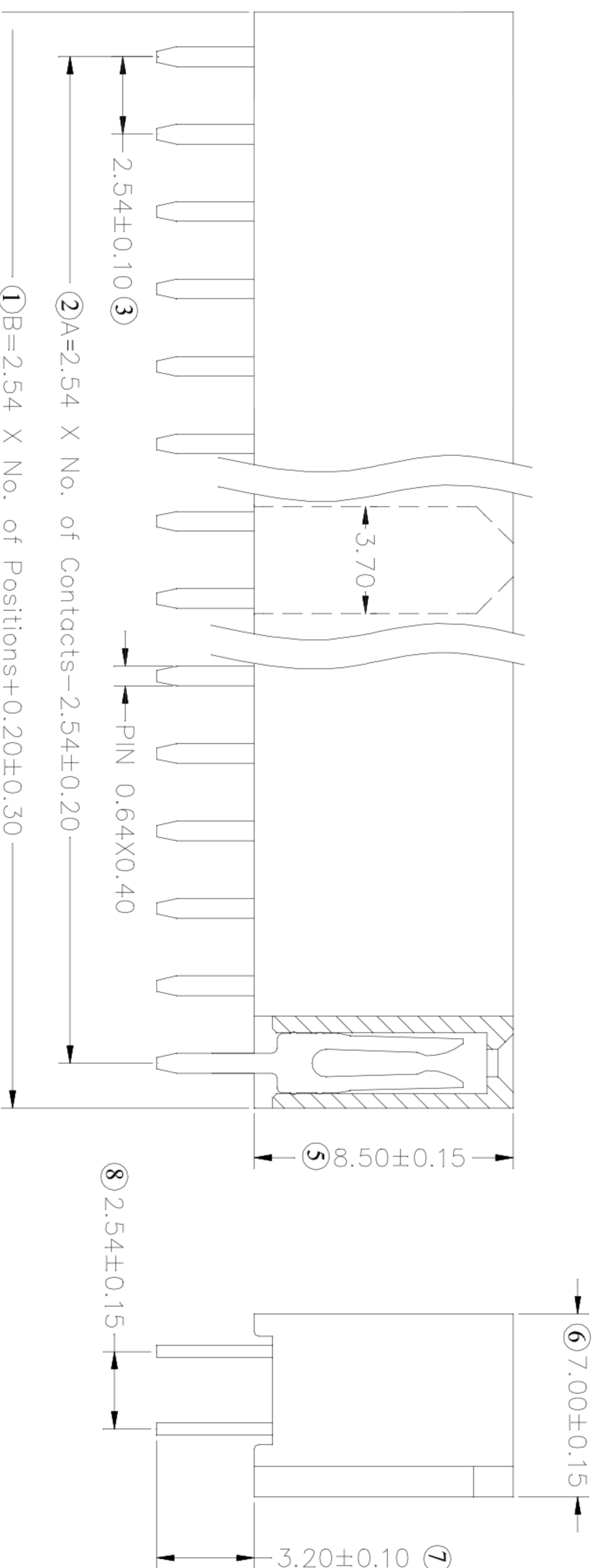
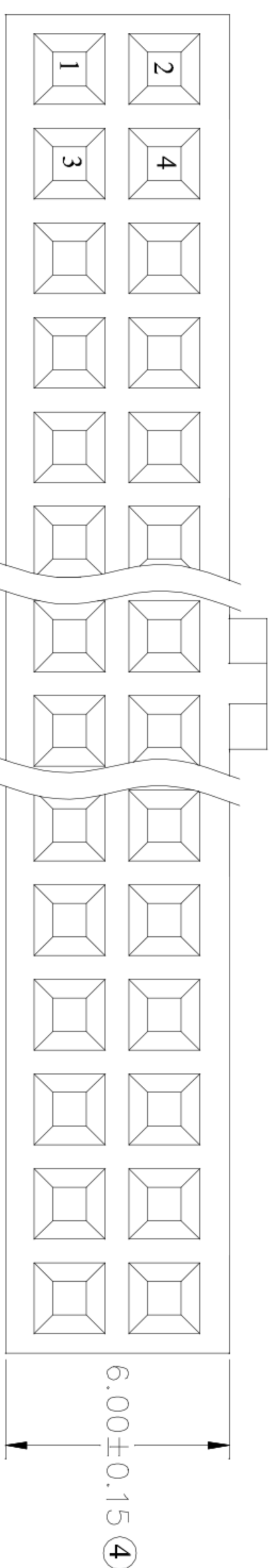


2.54*2.54mm (0.100"*0.100") FEMALE HEADER, DUAL ROW, STRAIGHT WITH POLARIZATION BUMP H=8.5mm

SPECIFICATIONS

Current Rating:3AMP
 Contact Resistance:20mΩ Max
 Insulation Resistance:1000MΩ Min
 Withstand Voltage:1000V AC/minute
 Operation Temperature:-40°C to +105°C

Contact:Phosphor Bronze
 plating:Au or Sn Over 50u" Ni
 Insulator:High Temperature Thermoplastic
 UL94V-0 Rated
 Standard:PBT+30%G.F



Recommended PCB Layout

No. of PIN/ROW	Dimension Information	
	A	B
04	7.62	10.36
05	10.16	12.90
06	12.70	15.44
07	15.24	17.98
08	17.78	20.52
09	20.32	23.06
10	22.86	25.60
11	25.40	28.14
12	27.94	30.68
13	30.48	33.22
14	33.02	35.76
15	35.56	38.30
16	38.10	40.84
17	40.64	43.38
18	43.18	45.92
19	45.72	48.46
20	48.26	51.00
21	50.80	53.54
22	53.34	56.08
23	55.88	58.62
24	58.42	61.16
25	60.96	63.70
26	63.50	66.24
27	66.04	68.78
28	68.58	71.32
29	71.12	73.86
30	73.66	76.40
31	76.20	78.94
32	78.74	81.48
33	81.28	84.02
34	83.82	86.56
35	86.36	89.10
36	88.90	91.64
37	91.44	94.18
38	93.98	96.72
39	96.52	99.26
40	99.06	101.80

APPROVALS		DATE		TITLE:	
DRAWN	ZHIWEI.CHEN	2015.07.07		2.54mm Crimp Style Connector	
CHECKED				PART NO. GP25-2521WV-2XNP-T	
APPROVALS				SCALE: 1:1	
TOLERANCES ARE		30~以上 ±0.30	ANGLE	PROJ.	
		10~30 ±0.20	±2°	DRAWING NO. _____	
		5~10 ±0.15		SHEET 1 OF 1	
		~5 ±0.10			



SHENZHEN LIANFENG ELECTRONIC CO.,LTD

ECN NO.	REV.	DATE.	DESCRIPTION.
	A		NEW
			CHANGE.